

## BELLEX CONTROLS

**with process data collection module  
and process data analysis tool**

**Collection of all the product and process data produced in the extrusion process.**



The Bellaform operating interface outputs process data such as temperature curves of the extruder heating or pressure curves in the vacuum tank as a trend curve in real time. Diameter and wall thickness, the distance between the nozzle exit and the calibration or the temperatures in the vacuum tank are recorded. All relevant data are provided in a format that permits further processing or archiving in a superordinate central control.

**Bellaform thus provides a decisive contribution so that you can offer your products in the best quality and at a competitive price.**

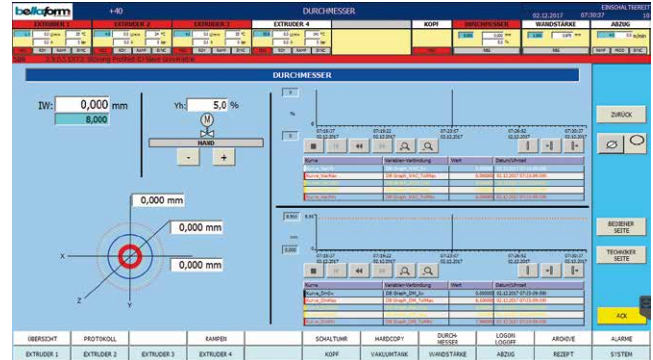
### Your benefit:

- + **Continually improve the production process** across the entire lifespan of the machine
- + **Substantial reduction of the NOK proportion**
- + **Faster and more meaningful error analysis** for production failures
- + **Complete traceability** of quality and production data
- + **Constant reduction of production costs** through the optimisation of material and media consumption
- + **Constant improvement in quality**

## BELLEX CONTROLS

### Comfortable analysis of the recorded process data:

The **process data storage module** collects all relevant production data cyclically and files them in year/month/day order and by individual product and lot number on the system PC or any other PC as required. The archived production data can be depicted graphically and numerically with the help of the **process data analysis software** that runs on every standard Windows PC.



#### Basic functions:

- Communication via Profinet with all system components
- Extruders and positions can be freely activated and deactivated
- Extruder visualisation: Temperature, Speed, Mass temperatur, Mass pressure
- Weekly timer
- Set-back temperature
- Vacuum tank visualisation: Water temperature, Vacuum, Pump speed, Nozzle distance
- Recipe administration with all relevant parameters for each product
- Synchronous operation or ramp function for all drives in the system
- Trend graphic for all relevant process parameters
- Diameter regulation via the vacuum
- Scrap cut function
- Batch print out
- Fault report page with archive
- Access authorisation to the screen pages using a password

#### Options:

- Remote maintenance system: short global reaction times in the event of machine standstill
- Integration into visualisation: Measurement systems of all known manufacturers, Gravimetry with metre weight regulation for the extruder, Flame impingement system
- Drying systems
- Conveying systems

#### New Functions:

- Process storage module
- Process data analysis tool

**Bellaform GmbH**  
Marie-Curie-Straße 14  
55435 Gau-Algesheim  
GERMANY

info@bellaform.com  
Phone: +49 6725 91925-0  
Fax: +49 6725 91925-200  
www.bellaform.com

